

REZIDE

Every home has a story.
We tell it...



REZIDE

info@rezide.group | www.rezide.group | 01509 274474

Bay Tree House

Old Dalby, Leicestershire

WWW.REZIDE.GROUP

Set within the heart of Old Dalby, Bay Tree House is a contemporary village home with a quiet sense of presence.

Behind its handsome brick elevations, generous interiors unfold across three floors, with spaces made for cooking, gathering, working and retreating.

The kitchen and orangery form the social centre, while the sitting room, entertaining room and landscaped gardens bring a sense of occasion to everyday life.

Elegant, practical and quietly confident, it is a home designed to be lived in beautifully.



Zachary Oldershaw
Creative Director

REZIDE

07712263185
Zachary@rezide.group

Bay Tree House

A home of scale, style and village character





The Social Heart

At the centre of Bay Tree House is a kitchen designed for the rhythm of everyday life.

Generous, elegant and highly functional, the space brings together classic cabinetry, a large central island and high-quality appliances to create a room that feels both refined and practical. It is a kitchen made for busy mornings, informal suppers and long conversations that continue well after the plates have been cleared.

Beyond the kitchen, the orangery adds a wonderful sense of light and volume. Beneath a vaulted ceiling, with bi-fold doors opening directly to the garden, it becomes a natural gathering place throughout the seasons.

Together, these spaces form the true heart of the home – open, sociable and beautifully connected to the outdoors.







Crafted for Modern Living

The quality of finish at Bay Tree House is evident in the details.

From the carefully chosen kitchen fittings to the elegant flooring, brass accents and beautifully appointed appliances, the interiors have been composed with a clear sense of style and permanence. Every space feels considered, yet never overdesigned.

There is a quiet confidence to the specification. Smeg appliances bring performance and reliability to the kitchen, while Villeroy & Boch bathrooms add a refined, luxurious feel to the private accommodation.

Practicality has also been carefully woven into the design. A utility room, study, cloakroom and excellent storage ensure the house works effortlessly day to day, while the overall finish gives each room a sense of polish and sophistication.

It is a home made for modern living, without losing its sense of warmth.







Places to Gather

Bay Tree House is a home with more than one way to bring people together.

The lounge offers a calmer, more intimate space, centred around a log burner and designed for relaxed evenings by the fire. Comfortable, welcoming and separate from the main kitchen, it provides balance to the more open-plan areas of the house.

Beyond this, the entertaining room gives the ground floor a further sense of occasion. Rich in atmosphere and opening through bi-fold doors to a covered barbecue area, it is a space made for evenings with friends, family celebrations and weekends that drift naturally between indoors and out.

Each reception space has its own purpose and personality, yet together they create a home that feels sociable, versatile and wonderfully easy to enjoy.









The Principal Retreat

The principal bedroom suite provides a calm and beautifully appointed retreat from the rest of the house.

Generous in scale and thoughtfully arranged, the bedroom feels peaceful and composed, with space to unwind at the end of the day. A fitted dressing room adds a sense of everyday luxury, creating a practical and elegant transition between the bedroom and en-suite.

The en-suite bathroom continues the refined feel found throughout the home, with twin vanity wash basins and a high-quality finish that gives the suite a quiet hotel-like quality.

It is a space that feels grown-up, private and considered — a principal suite designed not simply for sleeping, but for retreating.





CHRISTIAN DIOR



Quiet Luxury

Across the first and second floors, the private accommodation has been designed with comfort and flexibility in mind.

Alongside the principal suite, two further bedrooms occupy the first floor, served by a beautifully appointed family bathroom with a roll-top bath and separate shower. The finish is elegant and understated, combining contemporary fittings with a softer, more timeless feel.

The second floor provides two additional good-sized bedrooms and a shower room, making the home especially well suited to larger families, visiting guests or older children seeking a little more independence.

With five bedrooms and three bathrooms in total, Bay Tree House offers the space required for family life, while retaining a sense of calm and refinement throughout.

These are rooms that feel private, peaceful and quietly luxurious.





Space to Adapt

One of the strengths of Bay Tree House is the way it adapts to the changing needs of family life.

The study provides a dedicated place to work from home, read or manage the demands of everyday living, separate from the more sociable spaces of the house. Additional rooms across the upper floors offer further flexibility, whether used as bedrooms, guest accommodation, dressing space, hobbies or quiet corners away from the main flow of the home.

The detached double garage adds another valuable dimension, with electric roller doors, garden access and excellent storage or parking potential.

Rather than being fixed to one way of living, the house offers options. It has space for family, guests, work, entertaining and retreat — all within a layout that feels natural and easy to use.





Life Outside

The gardens at Bay Tree House have been landscaped to feel both elegant and effortless.

Designed with a low-maintenance approach, the rear garden combines stone paving, structured planting, generous patio space and a further seating area at the far end, creating a private courtyard-like feel. It is a garden made for use, not just outlook.

The connection between house and garden is particularly successful. The orangery opens directly onto the terrace, while the entertaining room links to a covered barbecue area, allowing life to move easily outside during warmer months.

With a sunny aspect, outside lighting, power and water, the garden is as practical as it is attractive.

Whether hosting friends, enjoying a quiet morning coffee or spending long summer evenings outdoors, this is a space designed to be lived in.









Village Life, Well Connected

Old Dalby is one of those villages that offers a genuine sense of place.

Positioned on the fringe of the Vale of Belvoir, it enjoys a rural setting surrounded by open countryside, yet remains well connected to nearby towns, schools and commuter routes. It is a village with an established community, a well-regarded pub, a primary school, local clubs and societies, and a calendar of events that gives village life real energy.

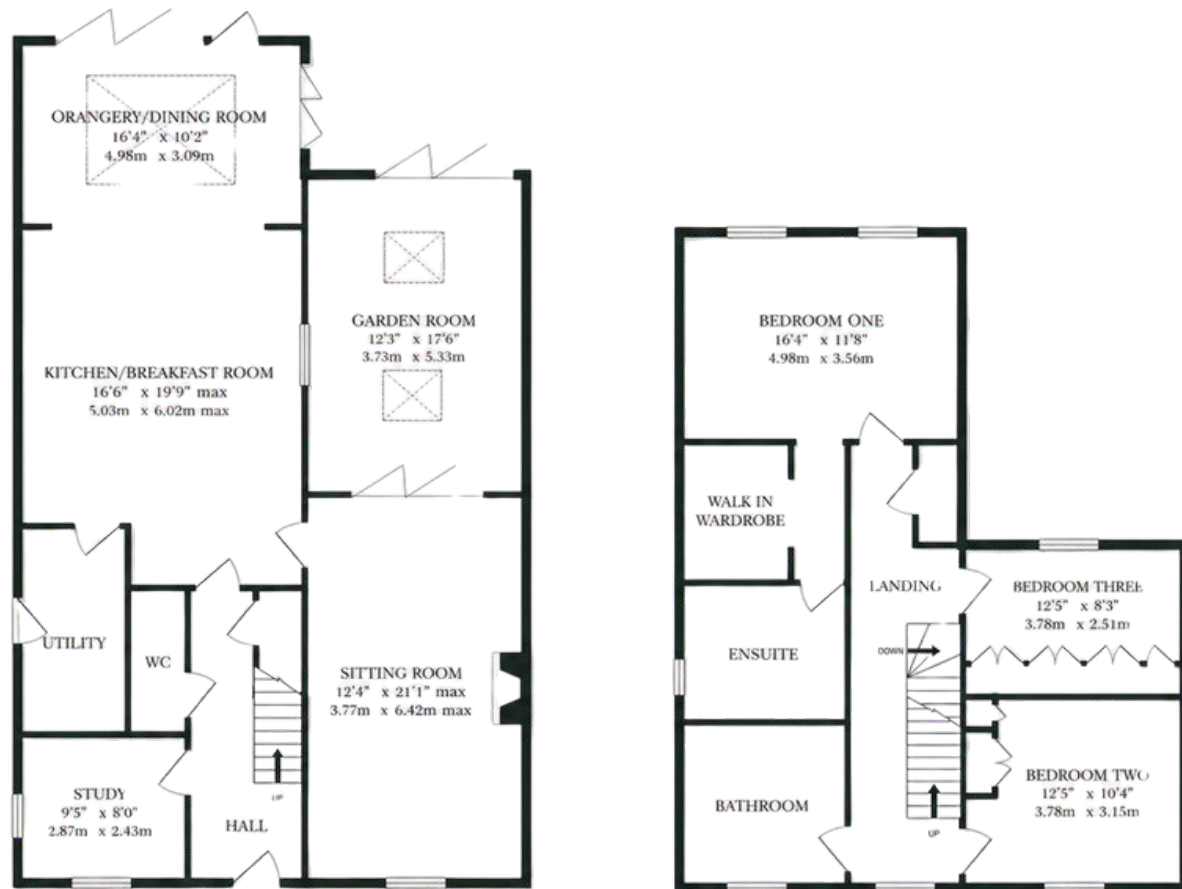
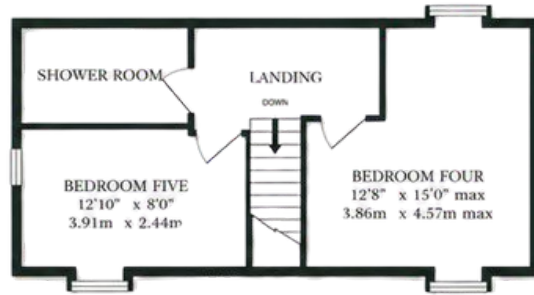
For families, the location is especially appealing. Ratcliffe College is around a ten-minute drive away, with bus links to Loughborough Endowed Schools, while Melton Mowbray and Loughborough are both within easy reach.

Direct rail services to London are available from nearby stations, and East Midlands Airport is also accessible.

Bay Tree House offers the best of both worlds: countryside calm, community spirit and everyday convenience.







TOTAL FLOOR AREA : 2372 sq.ft. (220.3 sq.m.) approx.

Whilst every attempt has been made to ensure the accuracy of the floorplan contained here, measurements of doors, windows, rooms and any other items are approximate and no responsibility is taken for any error, omission or mis-statement. This plan is for illustrative purposes only and should be used as such by any prospective purchaser. The services, systems and appliances shown have not been tested and no guarantee as to their operability or efficiency can be given.

Made with Metropix ©2023

